



# ASTRA CMS Database

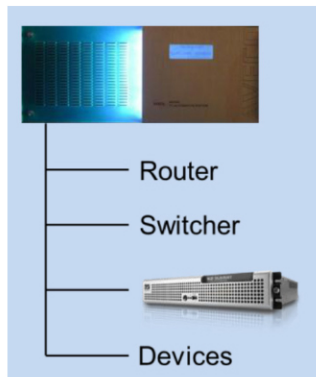
## ASTRA Database

The ASTRA CMS database can reside in one of three different locations based on the architecture. Key factors are the size of the system, redundancy options, number of users and the size of the database.

The database content is identical for all architectures. As the system grows with additional channels, more users, and additional functionality, the database requires more RAM and CPU cycles. The flexibility of ASTRA enables the physical location of the database to move as the system grows without any change in functionality or user operations.

## ASTRA Standalone Architecture

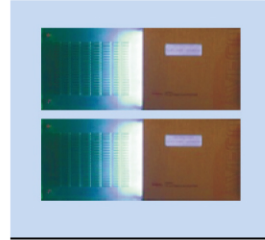
For small to moderate sized systems there is just one ASTRA server. The database and all the other ASTRA applications run on this shared server. The database is backed up on an internal disk for protection. Many installations will mirror this server for complete system redundancy.



*THE DATABASE, PLAYLISTS  
AND OTHER  
APPLICATIONS RUN ON  
A SHARED SERVER.*

## ASTRA BackOffice Orbiter Architecture

For larger systems with many users and applications, ASTRA BackOffice runs the ASTRA database separate from the playlists. This provides more dedicated resources for database operations. The BackOffice servers are generally mirrored for full redundancy.



*THE DATABASE AND OTHER  
MEDIA MANAGEMENT  
APPLICATIONS RUN ON  
ASTRA BACKOFFICE SERVERS  
WHICH ARE OFTEN MIRRORED  
FOR FULL REDUNDANCY*

## Remote Dedicated Server

For very large systems and for databases larger than 50,000 records, a high powered Linux-based mirrored server system is used for database management. This provides maximum protection and resources for database operations and number of users.



*MIRRORED DEDICATED  
DATABASE SERVERS FOR  
LARGE SYSTEMS.*

Location	Hardware	Database	Redundancy	Fulltext search	Records	Users
<b>Internal Shared</b>	Standalone ASTRA server	QNX Sybase Anywhere SQL	Mirrored server option	Separate server	50,000	10*
<b>BackOffice Dedicated</b>	Shared ASTRA server	QNX Sybase Anywhere SQL	Mirrored server option	Separate server	50,000	10*
<b>Remote Dedicated</b>	Mirrored Linux server	QNX Sybase Anywhere SQL	Mirrored server option	Internal	200,000**	10*

\* The number of users depends on the processing required by each user. A limit of 10 users is recommended but more could be accommodated if needed. Consult with AVECO system engineering before exceeding 10 users.

\*\* 200,000 records is a safe and tested number. Larger databases may be possible – consult with AVECO system engineering.